

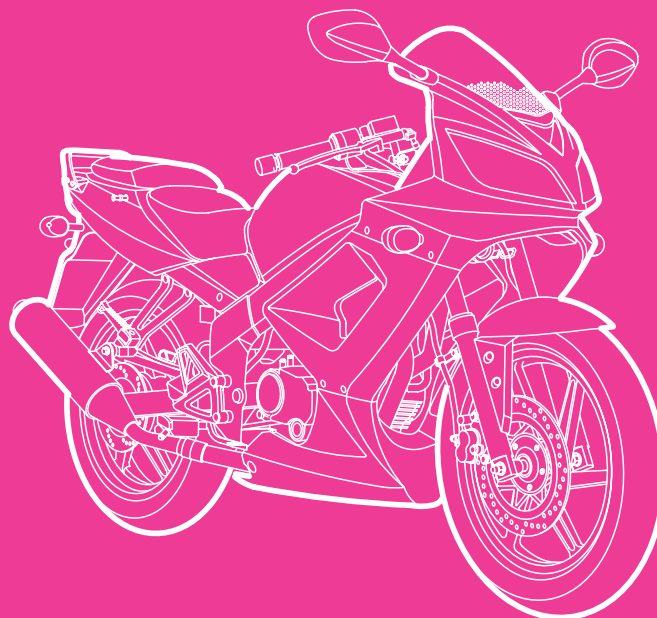


# DRIVER'S MANUAL

---

KWANG YANG MOTOR CO.,LTD.

## ***QUANNON 125***





**KYMCO**

Dear KYMCO bike Users:

Thank you for purchasing this KYMCO bike and welcome to the family of KYMCO bike riders. To enjoy safer and more pleasant riding, become thoroughly familiar with this owner's manual before you ride the bike. Your safety depends not only on your own alertness and familiarity with the bike but also the bike mechanical condition. A pre-ride inspection before every outing and regular maintenance are essential. The quality of each KYMCO bike is guaranteed.

- Note:**
1. The information and specifications stated in this manual are for reference only and subject to change without notice.
  2. When starting the engine, the battery must be installed to facilitate starting and increase the engine performance.

---

---

---

## TABLE OF CONTENTS

---

---

---

<b>1.PRECAUTIONS FOR A SAFE RIDING</b>	3
<b>2.ASSEMBLY PARTS</b>	5
<b>3.OPERATION INSTRUCTIONS</b>	7
IGNITION SWITCH/STEERING HANDLEBAR LOCK	7
ELECTRIC STARTER BUTTON. HEADLIGHT SWITCH	8
ENGINE STOP SWITCH. PASSING LIGHT CONTROL SWITCH	9
HEADLIGHT DIMMER SWITCH. TURN SIGNAL SWITCH	10
HORN BUTTON	11
HELMET BUCKLE. TOOL BOX	12
INSTRUMENTS AND INDICATORS	13
MULTI-FUNCTION DISPLAY	15
<b>4.PRE-RIDE INSPECTION</b>	20
ADVANCE INSPECTION. ENGINE OIL LEVEL INSPECTION/REFILING	20
BRAKE INSPECTION. TIRE INSPECTION	21
FUEL LEVEL INSPECTION/REFILLING	23
STEERING HANDLEBAR. BRAKE SHOE INSPECTION	17



---

---

## TABLE OF CONTENTS

---

---

HORN/LIGHTS INSPECTION .....	25
DRIVE CHAIN INSPECTION/ADJUSTMENT	
CLUTCH LEVER FREE PLAY INSPECTION .....	26
FRONT/REAR SHOCK ABSORBER INSPECTION	
BRAKE PERFORMANCE INSPECTION. REARVIEW MIRROR ANGLE CHECK	
LICENSE PLATE CHECK.	
PREVIOUS ABNORMAL PARTS INSPECTION	
LUBRICATION POINT CHECK .....	28
<b>5.ENGINE STARTING METHODS</b> .....	29
WHEN THE ENGINE IS COLD .....	29
WHEN THE ENGINE IS WARM .....	30
<b>6.NORMAL RIDING METHOD</b> .....	31
STARTING THE ENGINE. REBOUND THE SIDE STAND .....	31
CORRECT SITTING POSITION. START MOVING .....	32
<b>7.PRECAUTIONS FOR RIDING</b> .....	33

---

---

---

---

---

---

---

## TABLE OF CONTENTS

---

---

---

CORRECT RIDING. SPEED CONTROL .....	33
PROPER RIDING WILL PROLONG THE SERVICE LIFE OF ENGINE	
APPLY BOTH FRONT AND REAR BRAKES WHEN BRAKING .....	34
DO NOT MAKE SUDDEN STOP OR SHARP TURN	
BE MORE CAREFUL WHILE RIDING IN RAINY DAYS .....	35
<b>8.HOW TO STOP RIDING</b> .....	36
WHILE GO NEAR THE PARKING PLACE	
WHILE THE MOTORCYCLE IS COMPLETELY STOPPED .....	31
PARKING. HANDLEBAR .....	32
<b>9.EASY MAINTENANCE</b> .....	38
AIR CLEANER INSPECTION AND AIR CLEANER CLEANING&REPLACEMENT ....	38
APPEARANCE CLEANING .....	40
BATTERY .....	41
FUSE REPLACEMENT .....	42
ENGINE OIL CHANGE .....	44
SPARK PLUG INSPECTION .....	45



---

---

---

## TABLE OF CONTENTS

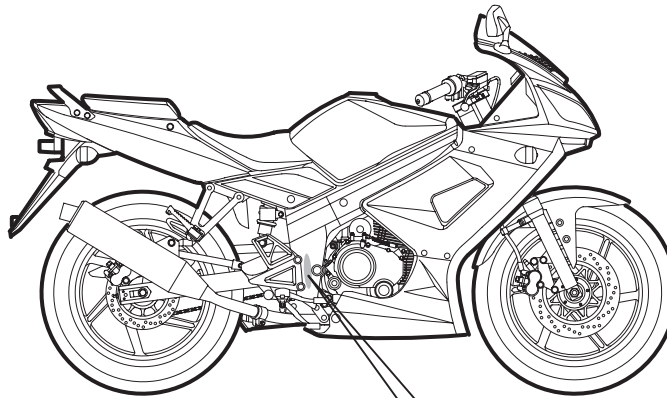
---

---

---

BRAKE FLUID LEVEL INSPECTION/REFILLING	
RUBBER COVER INSPECTION FOR WIRE AND CABLE .....	46
<b>10.IMPORTANT NOTICES</b> .....	47
WHEN THE ENGINE FAILS TO START OR STOPS DURING RIDING	
IN CASE OF BREAKDOWN .....	47
POLLUTION-FREE PERIODIC MAINTENANCE SCHEDULE .....	48
SPECIFICATIONS .....	49
CLEAN AIR SYSTEM .....	50





### **FRAME NUMBER**

The read frame number, please remove the cover on inner cover with a flat head screwdriver.

Frame number is the same written in document and warranty card.

Please write down your frame number in place below.

**FRAME NUMBER:**

---



Location of Frame Serial Number



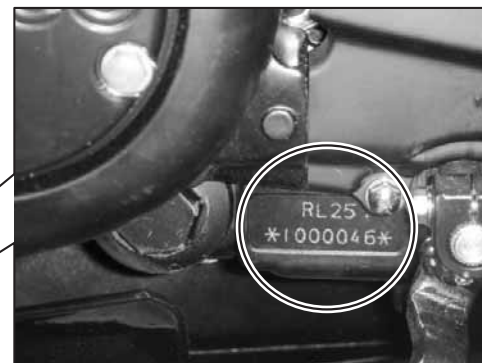
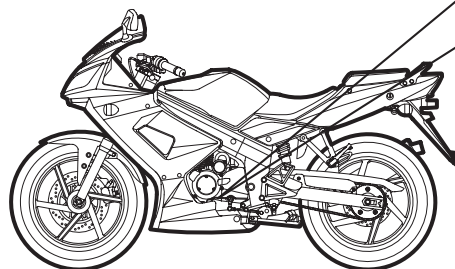


### ENGINE NUMBER

The engine number is stamped on left engine case.  
Please write down your engine number in place  
below.

**ENGINE NUMBER:**

\_\_\_\_\_

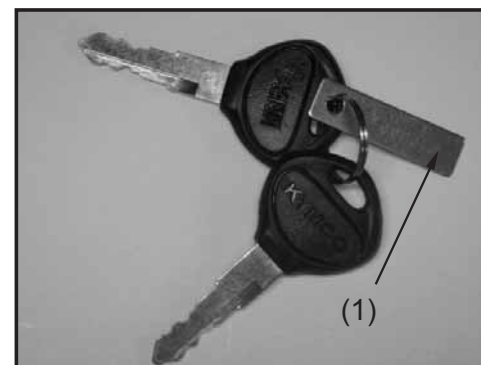


### KEY NUMBER

The key number (1) will be needed when you order  
replacement part. Record the number for your  
reference.

**KEY NUMBER:**

\_\_\_\_\_



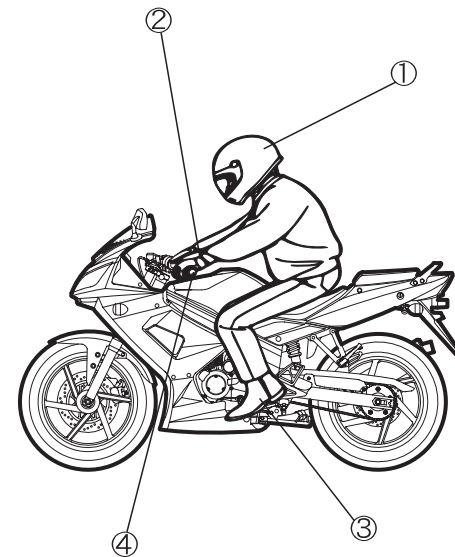
## 1. PRECAUTIONS FOR A SAFE RIDING

### (1) CLOTHES

- To relax and wear comfortable clothes are the main points for a safe riding.
  - To observe traffic laws, keep a cool mind, relax and be careful will provide you a safe riding.
- ① Wear helmet and fasten it tightly.
  - ② Have the clothes well-arranged. Fasten shirt cuffs and keep them from hooking the brake lever.
  - ③ Wear low-heeled shoes for a safe riding.
  - ④ When riding, use both hands to grasp the handlebar. It is very dangerous to hold the handlebar with one hand.

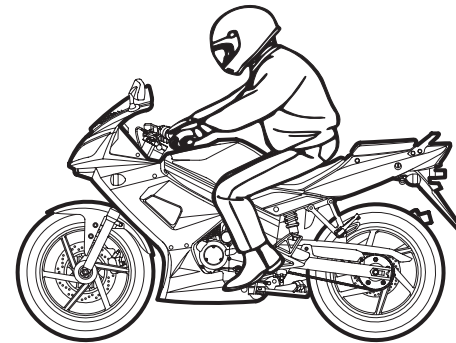
### **⚠ CAUTION:**

- A motorcycle rider should not wear loose or too long clothes to avoid danger.
- During riding or 10 minutes after the motorcycle is stopped, do not touch the exhaust muffler to avoid scalding.
- When parking the motorcycle, keep it away from dry lawn or inflammables to avoid danger.



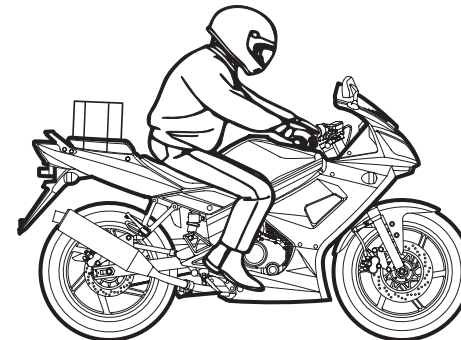
## **(2) RIDING METHOD**

- The safety of two-wheel vehicles is influenced by sitting position. The rider should sit on the central part of the seat cushion. If the rider sits on the rear part of the seat, the load of front wheel will decrease. As a result, the handlebar will swing and cause danger to the rider.
- When making a turn, it will be easier for the rider to steer the motorcycle by leaning the body inward slightly. The motorcycle will lose its balance if the rider fails to keep his body leaning inward.
- When riding on a damaged or macadam road. Slow down the speed and hold the handlebar tightly.

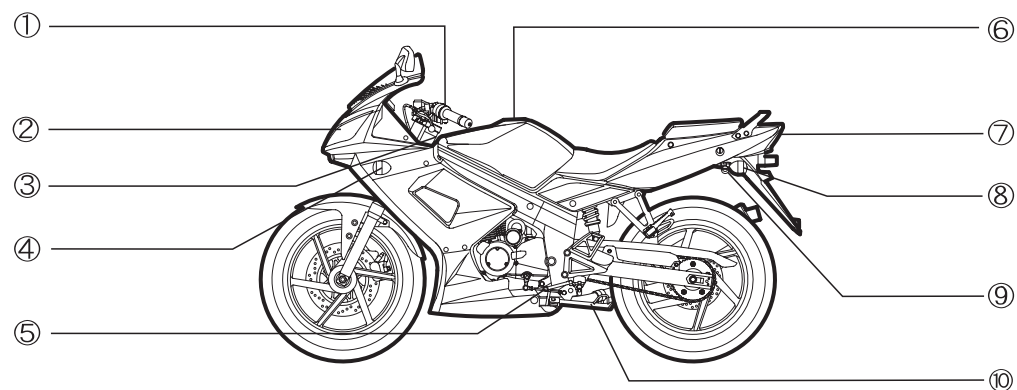


## **(3) CARRYING GOODS**

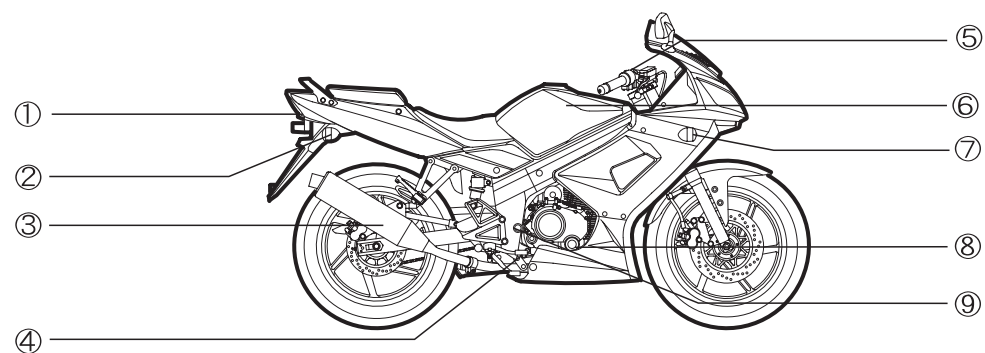
- Keep a good sitting posture to operate the motorcycle Properly.
- The feel of the handlebar will be different when carrying goods on the motorcycle.
- Overloading may cause the handlebar to swing. Avoid riding with overload.



## 2. ASSEMBLY PARTS



- |                         |                              |                             |
|-------------------------|------------------------------|-----------------------------|
| ① Passing Signal Switch | ③ Ignition Switch            | ⑦ Taillight/Stoplight       |
| Turn Signal Switch      | ④ L. Front Turn Signal Light | ⑧ L. Rear Turn Signal Light |
| Headlight Dimmer Switch | ⑤ Change Gear Shift Pedal    | ⑨ Helmet Buckle             |
| ② Headlight             | ⑥ Fuel Tank Cap              | ⑩ Side Stand                |



- ① Taillight/Stoplight
- ② R. Rear Turn Signal Light
- ③ Exhaust Muffler
- ④ Rear Brake Pedal

- ⑤ Headlight Switch & Electric Starter Button
- ⑥ Fuel Tank
- ⑦ R. Front Turn Signal Light

- ⑧ Oil Siphon Hole
- ⑨ Frame Serial Number

### 3. OPERATION INSTRUCTIONS

#### (1) IGNITION SWITCH/STEERING HANDLEBAR LOCK

- ① **NO** :At this position, power is connected to start the engine. The key cannot be taken out.
- ② **OFF** :At this position, power is cut off and the engine stops. The key can be taken out.
- ③ **LOCK** :At this position, the steering handlebar is locked. The key can be taken out.

##### 《 Locking Method 》

- Turn the steering handlebar left to the full and then push and turn the ignition switch key left to the "LOCK" position, The handlebar can be locked.

##### 《 Unlocking Method 》

- Turn the ignition switch key right to the "OFF" and the "ON" is released automatically.

##### **CAUTION:**

- After locking, turn the handlebar gently to make sure that it is locked.
- Do not turn the ignition switch to the "OFF" position during riding, otherwise the handlebar will be out of control and cause accidents.
- Don't park your motorcycle at a place to hinder the traffic.



## (2) ELECTRIC STARTER BUTTON "⚡"

- To start the engine, first turn on the ignition switch "ON" and then push the electric starter button. At this time, be sure to fully apply the front or rear brake lever in order to connect the power.

### ▲ CAUTION:

- During engine running, do not push the electric starter button to avoid engine damage.
- Turn the headlight switch off and turn signal switch off before using the electric starter button.
- Release the electric starter button immediately after the engine is started.



## (3) HEADLIGHT SWITCH

- At this position, the position light, headlight, instrument lights and taillight turn off together.
- ☐ At this position, the position light, instrument lights and taillight light turn on.
- ☀ At this position, the position light, headlight, instrument lights and taillight light all turn on.
- The headlight switch is not included in always lighting headlight region of bike.

