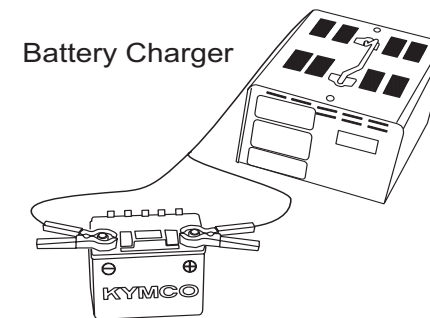
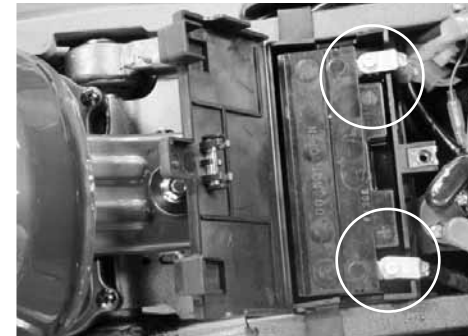


(3) BATTERY

- This type adopts the battery which needs no refilling of distilled water.
- When cleaning the battery terminals, remove the bolt attaching the front seat then remove the front seat.(see P.38)
- When battery terminals are corroded, take out the battery for cleaning.
- After cleaning, apply a thin coat of grease or Vaseline to battery terminals and then install the battery.

⚠ CAUTION:

- **Never open the closed-type battery electrolyte cap.**
- **If the motorcycle will not be used for a long time, the battery will discharge electricity by itself. Remove the battery and put it in a cool place after it is fully charged to prevent electricity leakage.**
- **If the motorcycle will not be used for a long time, remove the negative (-) terminal.**
- **Do not smoke or allow flames or sparks near the battery while removing and installing it.**
- **Turn off the ignition switch before removal or installation. The negative (-) terminal shall be removed first and the positive (+) terminal shall be installed first.**
- **Tighten the loose terminal nuts securely.**



(4) FUSE REPLACEMENT

When frequent fuse failure occurs, it usually indicates a short circuit or an overload in the electrical system. See your authorized KYMCO dealer for repair.

① Charge system fuse specification: 15A

② Ignition switch fuse specification: 15A

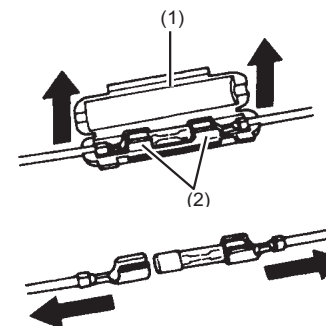
The spare fuse is on the battery cover.

⚠ CAUTION:

- To prevent accidental short-circuiting, turn off the ignition switch before checking or replacing a fuse.

Fuse replace:

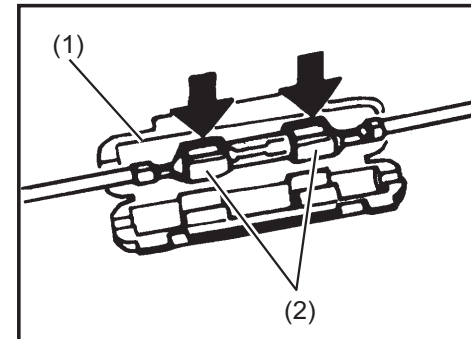
1. Remove the battery cover, by removing the screw.
(See P.41)
2. Open the fuse holders (1) and lift out the fuse with the clips (2).
3. Slide the old fuse out of the clips and discard it.



4. Slide the clips (2) onto the ends of the new fuse, push them back into the fuse holder (1), and close the fuse holder.
The spare fuse is on the battery compartment.

⚠ CAUTION:

- Do not pry the clips open to get a fuse out; you could bend them and cause poor contact with the new fuse. A loose fuse could cause damage to the electrical system and even start a fire. After replacing the fuse, be sure return the fuse holder to its original location.



(5) ENGINE OIL CHANGE

1. Place the motorcycle onto the lifter.
 2. Remove the oil dipstick.
 3. Remove the drain bolt to drain the oil.
 4. Refill fresh engine oil for 1.0 liter. Firmly tighten the oil dipstick.
 5. Warm up the engine and check the oil level again after the engine is stopped for 20~30 seconds.
- Specified Oil: SAE 15W-40
 - Capacity/Exchanging Capacity: 1.0L/0.9 L

CAUTION:

- When changing the engine oil, also clean the oil strainer and reinstall it.
- Use the specified engine oil.
- Change engine oil at first 300km and then change it at every 2000km.
- Engine oil will deteriorate easily and require more frequent change if the motorcycle is often ridden in dusty and cold areas or ridden for short distance.
- Do not mix engine oil of different classes or viscosities. It may cause damage for engine.

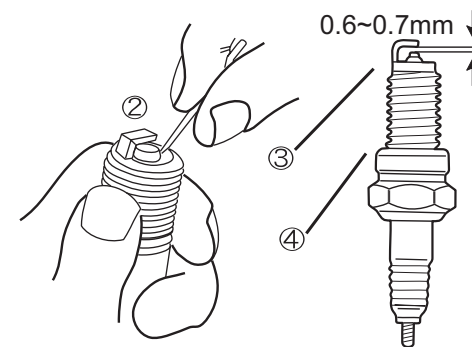


(6) SPARK PLUG INSPECTION

- Check the spark plug side electrodes for wear.
 - Fouling deposits on spark plug electrodes and big gap may result in weak spark.
 - Spark Plug Removal:
 - 1.Remove the spark plug with a spark plug remover.
 - 2.The installation sequence is the reverse of removal.
 - Spark Plug Cleaning:
 - 1.It is better to remove spark plug deposits with a spark plug cleaner.
 - 2.If a spark plug cleaner is not available , clean with a wire brush.
 - The side electrode gap is 0.6~0.7mm.
 - Specified Spark Plug: NGK-CR8E
- ① Spark Plug Cap ② Decarbonizing ③ Cracks , Damage
④ Gap, Wear, Fouling Deposits

▲ CAUTION:

- Clean the spark plug at every 5000km and replace it if necessary or when the center electrode is burned out.
- First screw in the spark plug with fingers and then tighten with a spark plug wrench.
- Use unspecified spark plug may damage the engine.



(7) BRAKE FLUID LEVEL INSPECTION /REFILLING

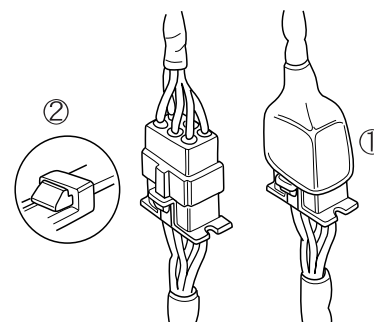
- Remove the 2 screws from the brake fluid tank and take off the cover.
- Add recommended brake fluid DOT-4 into the tank until the fluid level reaches the upper limit and then put on the cover and tighten the screws.
- Recommended Brake Fluid: DOT-4
- **Do not mix brake fluid of different brands. It may cause brake failure and is very dangerous. When refilling brake fluid, use towels to cover and protect the painted and coated surfaces.**
(Replace at every 10000km or once a year.)



(8) RUBBER COVER INSPECTION FOR WIRE AND CABLE

- The cable cores are protected by the rubber cover outside the connector. Check the rubber cover frequently for proper installation.
- When washing the motorcycle, do not flush the rubber cover directly or brush it. Use a wet rag to wipe off dirt and dust.

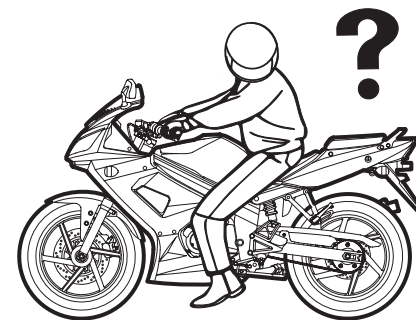
- ① Rubber Cover
② Check Points



10. IMPORTANT NOTICES

(1) WHEN THE ENGINE FAILS TO START OR STOPS DURING RIDING

- Is the gasoline enough?
- If the fuel indicator lights, refill nonleaded gasoline.
- Is the way to start the engine correct?
- Is there any other faulty parts?

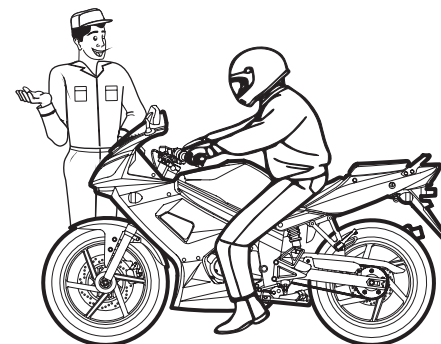


(2) IN CASE OF BREAKDOWN

- For any trouble occurred during riding, go to a KYMCO distributor or service station for inspection.

▲ CAUTION:

- For the sake of safety and to prevent vehicle damage and save your precious time, the pre-ride inspection is absolutely required. Please read this User's Manual carefully and get into a good habit of inspection before riding.





(3) POLLUTION-FREE PERIODIC MAINTENANCE SCHEDULE

- In order to have a safe riding, maintain good performance, prolong the scooter service life and reduce pollution, make sure to perform the periodic inspection and maintenance.

I: Inspect and clean, lubricate, refill, repair or replace if necessary.

A: Adjust C: Clean R: Replace T: Tighten

Item	2Stroke	✓ 4Stroke	Regular Service Mileage (KM)								Daily Pre-ride Inspection
			300	1000	3000	5000	7000	9000	11000	13000	
✓ Engine Oil	X	O	R	R	R	R	R	R	R	R	I
✓ Engine Oil Strainer	X	O	C		C		C		C		
Gear Oil	O	O	R		R		R		R		
Cooling Water	O	O	• Replace at every 10000 km or once a year it at every 5000 km.								I
✓ Spark Plug	O	O	• Clean (C) at every 2000km and replace (R) at every 5000 km.								
✓ Valve Clearance	X	O	A		A		A		A		
✓ Carburetor	X	O			I		I		I		
✓ Drive Belt	O	O								I	
✓ Drive Chain	O	O		A	A	A	A	A	A	A	
✓ Air Cleaner	O	O		I	R	I	R	I	R	I	
✓ Battery Electrolyte	O	O		I	I	I	I	I	I	I	I
✓ Fuel Filter Screen	O	O					R				
✓ Brake System	O	O		I	I	I	I	I	I	I	I
✓ Clutch Lever Free Play	O	O	A		A	A	A	A	A	A	
✓ Bolts & Nuts	O	O	T			T			T		
✓ Tire Pressure	O	O		I	I	I	I	I	I	I	I
Motor Oil Strainer	O	X									
Engine Oil Pump	O	X	I		I		I		I		
The above items are applicable to different models. Perform suitable items for each model. When exceeding the listed mileage, perform maintenance according to the listed intervals. The air cleaner requires more frequent cleaning or replacing when ridden in unusually dusty areas.											



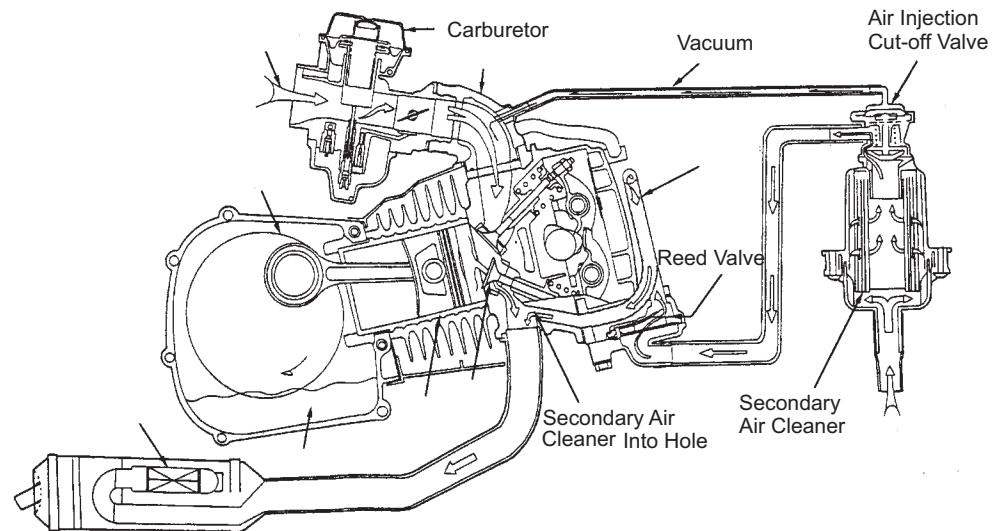
(4) SPECIFICATIONS

Engine Type	OHC air cooling 4-stroke single cylinder	Overall Length	2057 mm
Displacement	124.1 cc	Overall Width	725 mm
Bore x Stroke	56.5x49.5 mm	Overall Height	1174 mm
Compression Ratio	11 : 1	Dry Weight	137 kg
Max. Output	13 / 9500 ps/rpm	Wheel Base	1355 mm
Max. Torque	1/8500 kg.m/rpm	Ground Clearance	170 mm
Idle Speed	1600 rpm	Tire Size	FR:110/80-17 RR:140/70-17
Transmission Type	Left foot operated gear shift pedal	Fuel Type	nonleaded gasoline
Clutch	Wet Multi-Disc Clutch	Oil Tank Capacity	1.0 liter
Ignition	C.D.I.+T.P.S	Fuel Tank Capacity	13.5 liter
Starting System	Starting motor	Engine Oil Type	SAE15W40
Spark Plug	NGK-CR8E	Battery	12V6.5AH
Brake Type	Disk/Disk	Fuse	15A



11.KYMCO CLEAN AIR SYSTEM (FOR EURO 3)

The KYMCO Clean Air System is a secondary air suction system that helps the exhaust gases to burn more completely. When the spent fuel charge is released into the exhaust system, it is still hot enough to burn. The system allows extra air into the exhaust system so that the spent fuel charge can continue to burn. This continued burning action tends to burn up a great deal of the normally unburned gases, as well as changing a significant portion of the poisonous carbon monoxide into harmless carbon dioxide.



KWANG YANG MOTOR CO.,LTD.
NO.35 Wan Hsing Street, San Min District
Kaohsiung, Taiwan, Republic of China
Telephone : 886-7-3822526
FAX : 886-7-3950021

By KWANG YANG Motor Co., Ltd.
First Edition, Jul 2006
All rights reserved. Any reproduction or
unauthorized use without the written permission of
KWANG YANG Motor Co., Ltd.
is expressly prohibited.
4121-LEC8-U00